

企业简介

Company Profile



20+

20多项发明专利

70%

客户覆盖率逐年提升超七成

30%

研发工程师占比30%以上

N+

广大客户的一致好评

苏州英谷激光有限公司，成立于2013年，总部位于美丽的苏州工业园区，并在全国各地设有办事处，是一家集研发、生产、销售于一体的国家高新技术企业。公司现已拥有20多项发明专利，荣获“国家高新技术企业”、“江苏省科技型中小企业”、“江苏省民营科技企业”、“苏州工业园区科技领军人才”等荣誉称号。

Suzhou Inngu Laser Co., LTD is a national high-tech enterprise integrated with R&D, manufacturing and selling. Since established in 2013, it has been granted over 20 patents and gained honors such as National High Technology Enterprise, Jiangsu Science and Technology SEMS, Jiangsu Private Technology Enterprise, Science and Technology Leading Talents in Suzhou Industry Park.

在全体员工的不懈努力之下，英谷激光目前已颇具规模，拥有国际一流的技术研发中心，建有百级超净实验室和生产车间。公司注重技术的改进和创新，人才的引进和培养，专注自主研发，精心打造了一支由光学、电子、软件、机械等博士、硕士专业人才组成的高级研发团队，其中，研发工程师占比30%以上。

Under the unremitting efforts of Inngu staff, Inngu Laser has developed with considerable scale, first rank international technical research center, hundred class ultra clean laboratory and workshop. Inngu laser also focus on the improvement and innovation of technology, introduction and cultivation of talents and independent R&D. It has an advanced R&D team consisting of professional Ph.D and master talents in optical, electronic, software and mechanical, in which R&D engineers accounting for over 30%.

公司所生产的皮秒、纳秒固体激光器，主要用于各类高端工业激光设备，尤其是基于纳秒高功率紫外和超快皮秒的激光加工设备，适用范围广阔，包括激光3D打印、PCB精密切割、手机制造、半导体、玻璃切割、太阳能电池等行业，并获得了业内和广大客户的一致好评。

The picosecond and nanosecond DPSS lasers produced by Inngu Laser are mostly used for high end industrial laser systems especially laser processing systems based on high power UV nano second laser and ultra fast pico second laser. Our products have wide applications including industries like 3D printing, PCB precision cutting, cell phone manufacturing, semiconductor, glass cutting and solar battery, which gains high phrases from the industry and customers.

我们一直秉承着“科技创新，合作共赢，诚信高效，服务一流”的理念，用心服务每一位客户。同时，我们愿与各方同行一起，为推动中国的激光高科技产业的发展做出贡献。

We are keen on the concept of technological innovation, win-win cooperation, integrity and efficiency, first-rate service and serve each of our customers with sincerity. Meanwhile, we are intended to make contributions to the development of Chinese laser high technology industry with all counterparts.

目录 Catalogue

01/02

企业简介
Company Profile

04/07

飞秒系列激光器
Femto Second Series Laser

08/11

皮秒系列激光器
Pico Second Series Laser

12/16

Grace X系列激光器
Grace X Series Laser

17/20

Pulse系列激光器
Pulse Series Laser

21/22

企业荣誉
Our Honors

21/22

合作领域
Cooperation Areas

23/24

企业文化
Company Culture

23/24

团队风采
Team Presence

25/26

办公地点/服务区域
Office Address/Service Area

FEMTO SECOND SERIES LASER 飞秒系列激光器

工业级设计和制造
Industrial design and production

INNGU OS 2.0版本
INNGU OS 2.0 Version

WINDOWS操作软件
WINDOWS Operation Software



噪声低 输出功率高
Low noise and high output power

体积小 一体式设计
Small size and intergrated design

RS232控制
RS232 Control

外部GATE/TTL/PWM控制
External GATE/TTL/PWM control

显示面板

半导体

FPC

太阳能

高精密工业

科研

一体式的设计, 结构紧凑, 体积小, 有效提升了它的方便性和稳定性。采用工业级的设计和工艺制造, 可实现更长寿命的稳定运行, 满足苛刻的使用环境要求, 使用时可不受外界干扰, 噪声低, 输出功率高, 系统稳定性强。

飞秒紫外激光器 UV femto second laser

性能特点 Characteristics



- 一体化设计, 体积小
- 超低噪声, 稳定性强
- 优越的光束质量(M2 <1.3)
- 高平均功率, 出色的脉冲能量
- 长期工作稳定性高, 24/7工业级应用
- 脉冲能量稳定性高, 适用于多个领域
- Integrated design and small size
- Low noise and high stability
- Excellent beam quality(M2 <1.3)
- High average power and excellent pulse energy
- High stability for long-term working, 24/7 industrial application
- High stability of pulse energy and applied in multiple fields

技术参数 Parameters

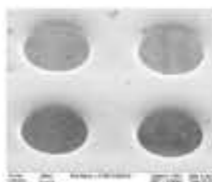
MODEL	GXF 343-5	GXF 343-15	GXF 343-30
波长Wavelength	343nm		
重复频率Pulse Repetition Rate Range	1Hz~1000kHz		
脉冲宽度Pulse Width	400fs-800fs		
平均功率Average Power	5W@1MHz	15W@1MHz	30W@1MHz
平均功率稳定性Average Power Stability	<3% RMS over 8 hours		
单脉冲稳定性Pulse-to-Pulse Stability	<3%rms over 10mins		
光斑模式Spatial Mode	TEM00(M2 <1.3)		
光束发散角Beam Divergence Full Angle	< 2mrad		
光束直径1/e2 Beam Diameter	1.5±0.2mm		
光斑圆度Beam Roundness	>85%		
指向稳定性Pointing Stability	<50urad		
偏振方向Polarization Direction	Horizontal		
偏振比Polarization Ratio	>100: 1		
工作电压Operating Voltage	90-260VAC		
冷却方式Cooling	Water-cooling		

适用范围 Application

飞秒紫外激光器适用于OLED切割、晶圆切割、薄聚合物薄膜和薄膜的切割、柔性电路和低介电常数材料的加工。 Femtosecond UV lasers are suitable for OLED cutting, wafer cutting, thin polymer film and film cutting, flexible circuit and low dielectric constant material processing.



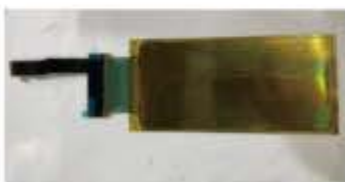
不锈钢片加工



不锈钢钻孔



薄膜切割



OLED切割

Green femto second laser 飞秒绿光激光器

性能特点 Characteristics



- 优越的光斑模式
- 可靠性高, 寿命长
- 加工范围广泛, 效率高
- 脉冲能量稳定性高, 适用于多个领域
- 长期工作稳定性高, 24/7工业级应用
- 输出功率高, 脉宽短, 脉冲能量高
- Excellent spatial mode
- High reliability and long working life
- Wide processing range and high efficiency
- High stability of pulse energy and applied in multiple fields
- High stability for long-term working, 24/7 industrial application
- High output power, short pulse width and high pulse energy

技术参数 Parameters

MODEL	GXF 515-10	GXF 515-30	GXF 515-40
波长Wavelength	515nm		
重复频率Pulse Repetition Rate Range	1Hz~1000kHz		
脉冲宽度Pulse Width	400fs-800fs		
平均功率Average Power	10W@1MHz	30W@1MHz	40W@1MHz
平均功率稳定性Average Power Stability	<3% RMS over 8 hours		
单脉冲稳定性Pulse-to-Pulse Stability	<3%rms over 10mins		
光斑模式Spatial Mode	TEM00(M2 <1.3)		
光束发散角Beam Divergence Full Angle	< 2mrad		
光束直径1/e2 Beam Diameter	1.5±0.2mm		
光斑圆度Beam Roundness	>85%		
指向稳定性Pointing Stability	<50urad		
偏振方向Polarization Direction	Vertical		
偏振比Polarization Ratio	>100: 1		
工作电压Operating Voltage	90-260VAC		
冷却方式Cooling	Water-cooling		

适用范围 Application

飞秒绿光激光器适用于聚合物切割、FPC切割、集成电路切割封装、晶圆切割、医疗器械制造、薄金属箔切割和变形。 Femtosecond green lasers are suitable for polymer cutting, FPC cutting, integrated circuit cutting and packaging, wafer cutting, medical device manufacturing, thin metal foil cutting and deformation.



FPC切割



氧化铁切割



半导体晶圆加工



喷嘴钻孔

飞秒红外激光器 IR femto second laser

性能特点 Characteristics



- 安全性高,易于系统集成
- 良好的指向稳定性和光束质量
- 紧凑的设计,确保输出功率高
- 加工范围广泛,效率高
- 长期工作稳定性高,24/7工业级应用
- 可靠性高,寿命长
- High safety and easy for system integration
- Good pointing stability and beam quality
- Compact design and ensure high output power
- Wide processing range and high efficiency
- High stability for long-term working, 24/7 industrial application
- High reliability and long working life

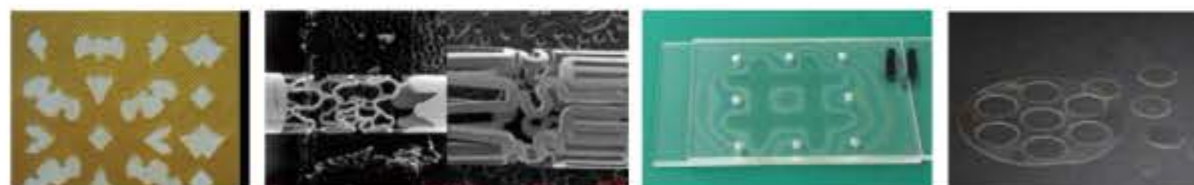
技术参数 Parameters

MODEL	GXF 1030-20	GXF 1030-50	GXF 1030-70
波长Wavelength	1030nm		
重复频率Pulse Repetition Rate Range	1Hz~1000kHz		
脉冲宽度Pulse Width	400fs-800fs		
平均功率Average Power	20W@1MHz	50W@1MHz	70W@1MHz
平均功率稳定性Average Power Stability	<±3% over 24 hours		
单脉冲稳定性Pulse-to-Pulse Stability	<3%rms over 10mins		
光斑模式Spatial Mode	TEM00(M2 <1.3)		
光束发散角Beam Divergence Full Angle	< 2mrad		
光束直径1/e2 Beam Diameter	1.5±0.2mm		
光斑圆度Beam Roundness	>85%		
指向稳定性Pointing Stability	<50urad		
偏振方向Polarization Direction	Vertical		
偏振比Polarization Ratio	>100: 1		
工作电压Operating Voltage	90-260VAC		
冷却方式Cooling	Water-cooling		

适用范围 Application

飞秒红外激光器适用于OLED切割、玻璃切割与焊接、薄膜切割、集成电路切割封装、医疗器械制造等领域。

IR femto second laser is applied in OLED cutting, glass cutting and welding, thin film cutting, IC package cutting, medical device manufacturing, etc.



薄膜加工

激光加工的心血管支架

玻璃焊接

蓝宝石切割

PICO SECOND SERIES LASER 皮秒系列激光器

INNGU OS 2.0版本
INNGU OS 2.0 Version

WINDOWS操作软件
WINDOWS Operation Software

百级超净实验室封装
Hundred Class Ultra Clean
Laboratory Encapsulation



一体化设计 结构紧凑
Integrated design and compact structure

无控制电源 接口简洁
No control power and concise interface

RS232控制
RS232 Control

外部GATE/TTL/PWM控制
External GATE/TTL/PWM control

显示面板

半导体

FPC

太阳能

高精密工业

科研

一体式设计,提高了激光器使用的便利性,同时提升了它的稳定性,保证了性能的可靠。支持Burst模式输出,可实现更长寿命的稳定运行,相对于纳秒激光器,拥有更高的峰值功率,支持更加精密的加工。

皮秒紫外激光器 UV pico second laser

性能特点 Characteristics



- 百级超净实验室封装
 - 优越的光束质量 ($M2 < 1.3$)
 - 长期工作稳定性高, 24/7工业级运用
 - 一体化设计, 结构简单, 性能可靠
 - 波长短, 聚焦光斑小, 适用于精密加工
 - 可选的操作人员锁定和报警设置功能
- Hundred Class Ultra Clean Laboratory Encapsulation
 - Excellent beam quality ($M2 < 1.3$)
 - High stability for long-term working, 24/7 industrial application
 - Intergrated design, compact structure and reliable performance
 - Short wavelength, small focused spot, applied for precise processing
 - Selectable functions of operator lock and alarm setting

技术参数 Parameters

MODEL	GXP 355-5	GXP 355-10	GXP 355-15	GXP 355-25	GXP 355-30	GXP 355-40
波长Wavelength	355nm					
重复频率Pulse Repetition Rate Range	50kHz to 2MHz		100kHz to 2MHz			
脉冲宽度Pulse Width	<15ps					
平均功率Average Power	> 5W@100kHz	> 10W@500kHz	> 15W@500kHz	> 25W@1MHz	> 30W@1MHz	> 40W@1MHz
平均功率稳定性Average Power Stability	<±3% over 24 hours					
单脉冲稳定性Pulse-to-Pulse Stability	<3%rms					
光斑模式Spatial Mode	TEM00($M2 < 1.3$)					
光束发散角Beam Divergence Full Angle	< 2mrad					
出口光斑直径1/e2 Beam Diameter	1.5mm±0.2			2.5mm±0.2		
光斑圆度Beam Roundness	>90%					
指向稳定性Pointing Stability	<50urad					
偏振方向Polarization Direction	Horizontal					
偏振比Polarization Ratio	100:1					
尺寸Size	700*250*140mm			760*300*138mm		
重量Weight	29.4kg			34kg		
冷却方式Cooling	Water-cooling					

适用范围 Application

皮秒紫外激光器适用于先进的精密激光加工领域(玻璃、蓝宝石、OLED和陶瓷等硬脆性材料加工)。

UV pico second laser is applied in advanced laser precise processing fields.(hard brittle materials processing like glass, sapphire cover glass, OLED and ceramic)



耳机膜切割

硅片切割

FPC切割

膜类切割

Green pico second laser 皮秒绿光激光器

性能特点 Characteristics



- 百级超净实验室封装
 - 优越的光束质量 ($M2 < 1.3$)
 - 长期工作稳定性高, 24/7工业级运用
 - 结构紧凑, 性能可靠, 工作效率高
 - 亮度高, 聚焦光斑小, 适用于科学等多个领域
 - 可选的操作人员锁定和报警设置功能
- Hundred Class Ultra Clean Laboratory Encapsulation
 - Excellent beam quality ($M2 < 1.3$)
 - High stability for long-term working, 24/7 industrial application
 - Compact structure, reliable performance and high efficiency
 - High luminance, small focused spot and applied in many fields like science
 - Selectable functions of operator lock and alarm setting

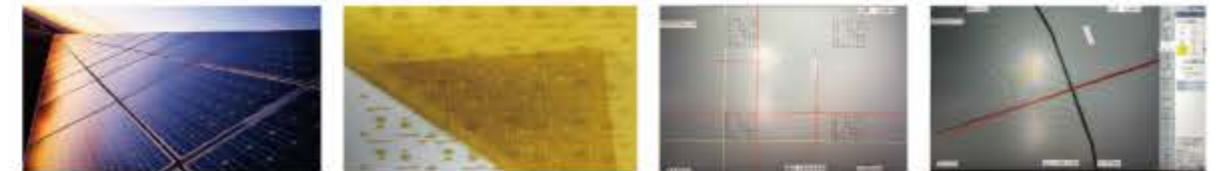
技术参数 Parameters

MODEL	GXP 532-10	GXP 532-20	GXP 532-30	GXP 532-40
波长Wavelength	532nm			
重复频率Pulse Repetition Rate Range	50kHz to 2MHz		100kHz to 2MHz	
脉冲宽度Pulse Width	<15ps			
平均功率Average Power	> 10W@100kHz	> 20W@500kHz	> 30W@500kHz	> 40W@500kHz
平均功率稳定性Average Power Stability	<±3% over 24 hours			
单脉冲稳定性Pulse-to-Pulse Stability	<3%rms			
光斑模式Spatial Mode	TEM00($M2 < 1.3$)			
光束发散角Beam Divergence Full Angle	< 2mrad			
出口光斑直径1/e2 Beam Diameter	1.2mm±0.2		2.5mm±0.2	
光斑圆度Beam Roundness	>90%			
指向稳定性Pointing Stability	<50urad			
偏振方向Polarization Direction	Vertical			
偏振比Polarization Ratio	100:1			
工作电压Operating Voltage	100-240VAC			
尺寸Size	700*250*140mm		760*300*138mm	
重量Weight	29.4kg		34kg	
冷却方式Cooling	Water-cooling			

适用范围 Application

皮秒绿光激光器可应用于半导体与光伏行业、高分子材料加工与处理等领域,同时也适用于心血管支架加工、导管制造、假肢制造等生命科学领域。

Green pico second laser is applied in the fields such as semiconductor and photovoltaic industry, macromolecule material processing industry and bioscience industry like cardiovascular stent processing, catheter manufacturing and artificial limbs manufacturing.



光伏太阳能电池

覆盖膜切割

玻璃打码

划线

皮秒红外激光器 IR pico second laser

性能特点 Characteristics



- 百级超净实验室封装
- 优越的光束质量 ($M2 < 1.3$)
- 长期工作稳定性高, 24/7工业级运用
- 结构简单, 性能可靠, 工作效率高
- 脉宽窄, 峰值功率高
- 可选的操作人员锁定和报警设置功能
- Hundred Class Ultra Clean Laboratory Encapsulation
- Excellent beam quality ($M2 < 1.3$)
- High stability for long-term working, 24/7 industrial application
- Compact structure, reliable performance and high efficiency
- Narrow pulse width and high peak power
- Selectable functions of operator lock and alarm setting

技术参数 Parameters

MODEL	GXP 1064-3	GXP 1064-20	GXP 1064-30	GXP 1064-50	GXP 1064-70	GXP 1064-100
波长Wavelength	1064nm					
重复频率Pulse Repetition Rate Range	50kHz to 2MHz			100kHz to 2MHz		
脉冲宽度Pulse Width	<15ps					
平均功率Average Power	> 3W@100kHz	> 20W@100kHz	> 30W@500kHz	> 50W@500kHz	> 70W@500kHz	> 100W@500kHz
平均功率稳定性Average Power Stability	<±3% over 24 hours					
单脉冲稳定性Pulse-to-Pulse Stability	<3%rms					
光斑模式Spatial Mode	TEM00($M2 < 1.3$)					
光束发散角Beam Divergence Full Angle	< 2mrad					
出口光斑直径1/e2 Beam Diameter	1.2mm±0.2			2.5mm±0.2		
光斑圆度Beam Roundness	>90%					
指向稳定性Pointing Stability	<50urad					
偏振方向Polarization Direction	Vertical					
偏振比Polarization Ratio	100:1					
工作电压Operating Voltage	100-240VAC					
尺寸Size	700*250*140mm			760*300*138mm		
重量Weight	29.4kg			34kg		
冷却方式Cooling	Water-cooling					

适用范围 Application

皮秒红外激光器适用于金属薄片刻蚀、3C行业玻璃切割、钻孔、燃油喷嘴钻孔、航空发动机散热片钻孔等高精度工业领域。
IR pico second laser is applied in high precise industrial fields such as metal sheet etching, glass cutting in 3C industry, drilling, fuel nozzle drilling and aero engine radiator drilling.



玻璃晶圆封装盖板



玻璃切割



陶瓷切割



PA66切割

GRACE X SERIES LASER Grace X系列激光器

精准温控智能调节系统

Intelligent control system for precise temperature control

输出功率稳定 功耗低

Stable output power and low power consumption

INGGU OS 2.0版本

INGGU OS 2.0 Version

WINDOWS操作软件

WINDOWS Operation Software



RS232控制

RS232 Control

外部GATE/TTL/PWM控制

External GATE/TTL/PWM control

一体化设计 结构紧凑

Integrated design and compact structure

无控制电源 接口简洁

No control power and concise interface

3D打印

物体打标

切割划线

激光调阻

科学研究

材料微加工

Grace X系列激光器采用一体化设计, 结构紧凑, 轻便, 小巧, 接口简洁, 驾驭自如, 精准的温控智能调节系统, 环境适应性强, 可应用于多种领域, 灵活性高。

Grace X Series Low Power UV Laser

Grace X系列低功率紫外激光器

性能特点 Characteristics



- 百级超净实验室封装
- 优越的光束质量 (M2<1.2)
- 长期工作稳定性高, 24/7工业级运用
- 体积更小, 结构紧凑, 功耗小, 无分体控制箱
- 可选的操作人员锁定和报警设置功能
- Hundred Class Ultra Clean Laboratory Encapsulation
- Excellent beam quality(M2 <1.2)
- High stability for long-term working, 24/7 industrial application
- Smaller size, compact structure, low power consumption and no seperated control box
- Selectable functions of operator lock and alarm setting

技术参数 Parameters (Nd:YVO4)

MODEL	Grace X 355-3	Grace X 355-5
波长Wavelength	355nm	
重复频率Pulse Repetition Rate Range	10kHz to 150kHz(Options:single shot to 200kHz)	
脉冲宽度Pulse Width	≤16ns@30kHz	
平均功率Average Power	>3W@30kHz	>5W@30kHz
平均功率稳定性Average Power Stability	<±3% over 24 hours	
单脉冲稳定性Pulse-to-Pulse Stability	<3%rms	
光斑模式Spatial Mode	TEM00(M2 <1.2)	
光束发散角Beam Divergence Full Angle	< 2mrad	
出口光斑直径1/e2 Beam Diameter	0.7mm	
光斑圆度Beam Roundness	>90%	
指向稳定性Pointing Stability	<50urad	
偏振方向Polarization Direction	Horizontal	
偏振比Polarization Ratio	100:1	
尺寸Size	375*175*125mm	
重量Weight	7.7Kg	
冷却方式Cooling	Water/Air-cooling	

可提供定制YAG/YLF激光器/Customized YAG, YLF laser provided

适用范围 Application

Grace X 355-3/5W紫外激光器适用于3D打印、大气检测、生物医疗、PCB、玻璃、塑料等材料打标。

Grace X 355-3/5 UV Laser is applied in the fields such as 3D printing, atmospheric detection, biomedical treatment, marking on materials like PCB, glass and plastic.



3D打印

ABS塑料打标

生物载玻片打标

塑料打标

PCB打码

Grace X Series High Power UV Laser

Grace X系列高功率紫外激光器

性能特点 Characteristics



- 百级超净实验室封装
- 优越的光束质量 (M2<1.3)
- 长期工作稳定性高, 24/7工业级运用
- 体积更小, 结构紧凑, 功耗小, 无分体控制箱
- 可选的操作人员锁定和报警设置功能
- Hundred Class Ultra Clean Laboratory Encapsulation
- Excellent beam quality(M2 <1.3)
- High stability for long-term working, 24/7 industrial application
- Smaller size, compact structure, low power consumption and no seperated control box
- Selectable functions of operator lock and alarm setting

技术参数 Parameters (Nd:YVO4)

MODEL	Grace X 355-12	Grace X 355-15	Grace X 355-20	Grace X 355-30
波长Wavelength	355nm			
重复频率Pulse Repetition Rate Range	30kHz to 150kHz (Options:single shot to 200kHz)	50kHz to 150kHz(Options:single shot to 200kHz)		
脉冲宽度Pulse Width	≤18ns@50kHz	≤20ns@50kHz		
平均功率Average Power	>12W@50kHz	>15W@50kHz	>20W@50kHz	>30W@50kHz
平均功率稳定性Average Power Stability	<±3% over 24 hours			
单脉冲稳定性Pulse-to-Pulse Stability	<3%rms			
光斑模式Spatial Mode	TEM00(M2 <1.3)			
光束发散角Beam Divergence Full Angle	< 2mrad			
出口光斑直径1/e2 Beam Diameter	0.7mm		1.0mm	4.0mm
光斑圆度Beam Roundness	>90%			
指向稳定性Pointing Stability	<50urad			
偏振方向Polarization Direction	Horizontal			
偏振比Polarization Ratio	100:1			
冷却方式Cooling	Water-cooling			

可提供定制YAG/YLF激光器/Customized YAG, YLF laser provided

适用范围 Application

Grace X 355-12/15/20/30W紫外激光器适用于薄膜蚀刻、玻璃打标、材料微加工、晶圆切割、覆盖膜切割、FPC切割等应用领域。

Grace X 355-12/15/20/30 UV Laser is applied in the fields such as film etching, glass marking, material microprocessing, wafer cutting, cover film cutting and FPC cutting.



铜线剥漆

钨钢切割

ABS膜切割

橡胶切割

pcb切割

Grace X series green laser

Grace X系列绿光激光器

性能特点 Characteristics



- 百级超净实验室封装
- 优越的光束质量 (M2<1.2)
- 长期工作稳定性高, 24/7工业级运用
- 体积更小, 接口简洁, 结构紧凑, 精准度高
- 可选的操作人员锁定和报警设置功能
- Hundred Class Ultra Clean Laboratory Encapsulation
- Excellent beam quality(M2 <1.2)
- High stability for long-term working, 24/7 industrial application
- Smaller size, concise interface, compact structure and high accuracy
- Selectable functions of operator lock and alarm setting

技术参数 Parameters (Nd:YVO4)

MODEL	Grace X 532-5	Grace X 532-10	Grace X 532-15	Grace X 532-20	Grace X 532-30
波长Wavelength	532nm				
重复频率Pulse Repetition Rate Range	10kHz to 150kHz(Options:single shot to 200kHz)				
脉冲宽度Pulse Width	<18ns@30kHz				
平均功率Average Power	>5W@30kHz	>10W@40kHz	>15W@40kHz	>20W@40kHz	>30W@60kHz
平均功率稳定性Average Power Stability	<±3% over 24 hours				
单脉冲稳定性Pulse-to-Pulse Stability	<3%rms				
光斑模式Spatial Mode	TEM00(M2 <1.2)	TEM00(M2 <1.5)			
光束发散角Beam Divergence Full Angle	< 2mrad				
出口光斑直径1/e2 Beam Diameter	0.7mm	1.0mm		1.3mm	
光斑圆度Beam Roundness	>90%				
指向稳定性Pointing Stability	<50urad				
偏振方向Polarization Direction	Vertical				
偏振比Polarization Ratio	100:1				
工作电压 Operating Voltage	90-260VAC				
冷却方式Cooling	Air-cooling	Water-cooling			

可提供定制YAG/YLF激光器/Customized YAG, YLF laser provided

适用范围 Application

Grace X 532系列绿光激光器适用于太阳能硅片刻槽切割、金属破阳、薄膜蚀刻、打标、切割、划线等应用领域。

Grace X 532 series green laser is applied in the fields such as solar silicon wafer grooving and cutting, destruction of metal anode layer, film etching, marking, cutting and scribing.



硅片切割刻槽



内雕



陶瓷剥银



键盘打标

Grace X series IR nano second laser

Grace X系列红外激光器

性能特点 Characteristics



- 百级超净实验室封装
- 优越的光束质量 (M2<1.2)
- 长期工作稳定性高, 24/7工业级运用
- 体积更小, 结构紧凑, 无控制电源, 机械稳定性强
- 可选的操作人员锁定和报警设置功能
- Hundred Class Ultra Clean Laboratory Encapsulation
- Excellent beam quality(M2 <1.2)
- High stability for long-term working, 24/7 industrial application
- Smaller size, compact structure, no control power and strong mechanical stability
- Selectable functions of operator lock and alarm setting

技术参数 Parameters (Nd:YVO4)

MODEL	Grace X 1064-10	Grace X 1064-20	Grace X 1064-30
波长Wavelength	1064nm		
重复频率Pulse Repetition Rate Range	10kHz to 150kHz(Options:single shot to 200kHz)		
脉冲宽度Pulse Width	<18ns@30kHz		
平均功率Average Power	>10W@CW; >8W@30kHz	>20W@CW; >15W@30kHz	>30W@CW; >24W@30kHz
平均功率稳定性Average Power Stability	<±3% over 24 hours		
单脉冲稳定性Pulse-to-Pulse Stability	<3%rms		
光斑模式Spatial Mode	TEM00(M2 <1.2)	TEM00(M2 <1.5)	TEM00(M2 <1.5)
光束发散角Beam Divergence Full Angle	< 2 mrad		
出口光斑直径1/e2 Beam Diameter	1mm		
光斑圆度Beam Roundness	>90%		
指向稳定性Pointing Stability	<50urad		
偏振方向Polarization Direction	Horizontal		
偏振比Polarization Ratio	100:1		
工作电压 Operating Voltage	90-260VAC		
冷却方式Cooling	Air-cooling/Water-cooling		

可提供定制YAG/YLF激光器/Customized YAG, YLF laser provided

适用范围 Application

Grace X 1064系列红外激光器适用于薄膜太阳能P1层蚀刻、ITO薄膜蚀刻、激光调阻、打标、切割、划线、科学研究等应用领域。

Grace X 1064 series IR nano second laser is applied in the fields such as film solar P1 layer etching, ITO film etching, laser trimming resistance, marking, cutting, scribing and scientific research.



陶瓷划线



手机后盖壳剥漆



透光按键



ITO薄膜蚀刻

PULSE SERIES LASER Pulse系列激光器

百级超净实验室封装
Hundred Class Ultra Clean Laboratory Encapsulation

INNGU OS 2.0版本
INNGU OS 2.0 Version

WINDOWS操作软件
WINDOWS Operation Software



分体式结构 散热快
Split structure fast heat dissipation

耗材更换方便 操作便捷
Easy replacement of consumables easy operation

RS232控制
RS232 Control

外部GATE/TTL/PWM控制
External GATE/TTL/PWM control

3D打印

微孔加工

薄膜蚀刻

晶圆切割

材料微加工

激光标记

Pulse系列激光器机箱集成度更高,整体功耗小,工作稳定性高。

Pulse series UV Laser Pulse系列紫外激光器

性能特点 Characteristics



- 百级超净实验室封装
- 优越的光束质量(M2<1.2)
- 长期工作稳定性高,24/7工业级运用
- 机箱集成度更高,整体功耗小
- RS232控制,外部GATE/ TTL/PWM控制
- LD可现场更换,安装维护简单方便

- Hundred Class Ultra Clean Laboratory Encapsulation
- Excellent beam quality(M2 <1.2)
- High stability for long-term working, 24/7 industrial application
- Higher integrated control box and low power consumed whole machine
- RS232 Control,External GATE/TTL/PWM control
- Changeable LD on site, easy and convenient to install and maintain

技术参数 Parameters (Nd: YV04)

MODEL	Pulse 355-3	Pulse 355-5	Super Pulse 355-12	Super Pulse 355-15	Super Pulse 355-20
波长Wavelength	355nm				
重复频率Pulse Repetition Rate Range	30kHz to 150kHz(Options:single shot to 200kHz)			50kHz to 150kHz (Options:single shot to 200kHz)	
脉冲宽度Pulse Width	≤16ns@30kHz		≤18ns@50kHz	≤20ns@50kHz	
平均功率Average Power	>3W@30kHz	>5W@30kHz	>12W@50kHz	>15W@50kHz	>20W@50kHz
平均功率稳定性Average Power Stability	<±3% over 24 hours				
单脉冲稳定性Pulse-to-Pulse Stability	<3%rms				
光斑模式Spatial Mode	TEM00(M2 <1.2)		TEM00(M2 <1.3)		
光束发散角Beam Divergence Full Angle	< 2 mrad				
出口光斑直径1/e2 Beam Diameter	0.7mm			1.0mm	
光斑圆度Beam Roundness	>90%				
指向稳定性Pointing Stability	<50urad				
偏振方向Polarization Direction	Horizontal				
偏振比Polarization Ratio	100:1				
腔体尺寸Cavity Dimension	261*152.5*97mm		415*165*106.5mm		
控制箱尺寸Dimension of Control Box (width*height*depth mm)	480*130*433mm				
重量Weight	14.6kg		19.3kg		
冷却方式Cooling	Water/Air-cooling		Water-cooling		

可提供定制YAG/YLF激光器/Customized YAG, YLF laser provided

适用范围 Application

Pulse紫外系列适用于薄膜蚀刻、玻璃打标、材料微加工、晶圆切割、覆盖膜切割、FPC切割、玻璃切割等领域。
Pulse series UV nano second laser is applied in the fields such as film etching, glass marking, material microprocessing, wafer cutting, cover film cutting, FPC cutting and glass cutting.



3M胶切割

键帽打标

陶瓷打码

PCB板切割

Pulse系列绿光激光器 Pulse series Green Laser

性能特点 Characteristics



- 百级超净实验室封装
- 优越的光束质量(M2<1.2)
- 长期工作稳定性高,24/7工业级运用
- 机箱集成度更高,整体功耗小
- RS232控制,外部GATE/ TTL/PWM控制
- LD可现场更换,安装维护简单方便
- Hundred Class Ultra Clean Laboratory Encapsulation
- Excellent beam quality(M2 <1.2)
- High stability for long-term working, 24/7 industrial application
- Higher integrated control box and low power consumed whole machine
- RS232 Control,External GATE/TTL/PWM control
- Changeable LD on site, easy and convenient to install and maintain

技术参数 Parameters (Nd: YV04)

MODEL	Pulse 532-5	Pulse 532-10	Super Pulse 532-15	Super Pulse 532-20	Super Pulse 532-30	Super Pulse 532-45	Super Pulse 532-60
波长Wavelength	532nm						
重复频率Pulse Repetition Rate Range	10kHz to 150kHz(Options:single shot to 200kHz)					100kHz to 300kHz	150kHz to 400kHz
脉冲宽度Pulse Width	<18ns@30kHz				<35ns@200kHz		<28ns@300kHz
平均功率Average Power	>5W@30kHz	>10W@30kHz	>15W@30kHz	>20W@60kHz	>30W@60kHz	>45W@200kHz	>60W@300kHz
平均功率稳定性Average Power Stability	<±3% over 24 hours						
单脉冲稳定性Pulse-to-Pulse Stability	<3%rms						
光斑模式Spatial Mode	TEM00(M2 <1.2)						
光束发散角Beam Divergence Full Angle	< 2 mrad						< 1.5mrad
出口光斑直径1/e2 Beam Diameter	0.7mm				1.3mm	1.5mm	
光斑圆度Beam Roundness	>90%						
指向稳定性Pointing Stability	<50urad						
偏振方向Polarization Direction	Vertical						
偏振比Polarization Ratio	100:1						
工作电压Operating Voltage	90-260VAC						
冷却方式Cooling	Air-cooling		Water-cooling				

可提供定制YAG/YLF激光器/Customized YAG, YLF laser provided

适用范围 Application

Pulse绿光系列激光器适用于太阳能硅片刻槽切割、金属破阳、薄膜蚀刻、打标、切割、划线等应用领域。
Pulse green lasers are suitable for solar silicon wafer groove cutting, metal breaking, film etching, marking, cutting, scribing and other applications.



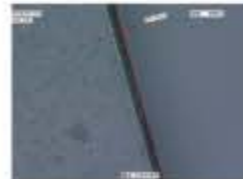
锂电池打标



键盘标记



铝合金切割



薄膜切割

性能特点 Characteristics



- 百级超净实验室封装
- 优越的光束质量(M2<1.2)
- 长期工作稳定性高,24/7工业级运用
- 机箱集成度更高,整体功耗小
- RS232控制,外部GATE/ TTL/PWM控制
- LD可现场更换,安装维护简单方便
- Hundred Class Ultra Clean Laboratory Encapsulation
- Excellent beam quality(M2 <1.2)
- High stability for long-term working, 24/7 industrial application
- Higher integrated control box and low power consumed whole machine
- RS232 Control,External GATE/TTL/PWM control
- Changeable LD on site, easy and convenient to install and maintain

技术参数 Parameters (Nd: YV04)

MODEL	Pulse 1064-10	Super Pulse 1064-20	Super Pulse 1064-30	Super Pulse 1064-50
波长Wavelength	1064nm			
重复频率Pulse Repetition Rate Range	10kHz to 150kHz(Options:single shot to 200kHz)			
脉冲宽度Pulse Width	<18ns@30kHz			<11ns@100kHz
平均功率Average Power	>10W@CW, >8W@30kHz	>20W@CW, >15W@30kHz	>30W@CW, >24W@30kHz	>51.5W@100kHz
平均功率稳定性Average Power Stability	<±3% over 24 hours			±0.5% over 24 hours
单脉冲稳定性Pulse-to-Pulse Stability	<3%rms			
光斑模式Spatial Mode	TEM00(M2 <1.2)	TEM00(M2 <1.5)		
光束发散角Beam Divergence Full Angle	< 2 mrad			< 4 mrad
出口光斑直径1/e2 Beam Diameter	< 0.7mm			1.6mm
光斑圆度Beam Roundness	>90%			
指向稳定性Pointing Stability	<50urad			
偏振方向Polarization Direction	Horizontal			
偏振比Polarization Ratio	100:1			
工作电压Operating Voltage	90-260VAC			
冷却方式Cooling	Water/Air-cooling			

可提供定制YAG/YLF激光器/Customized YAG, YLF laser provided

适用范围 Application

Pulse红外系列适用于薄膜太阳能P1层蚀刻、ITO薄膜蚀刻、激光调阻、打标、切割、划线、科学研究等应用领域。
Pulse IR series is suitable for thin film solar P1 layer etching, ITO film etching, laser trimming, marking, cutting, scribing, scientific research and other application fields.



ITO薄膜蚀刻



激光调阻



银浆蚀刻



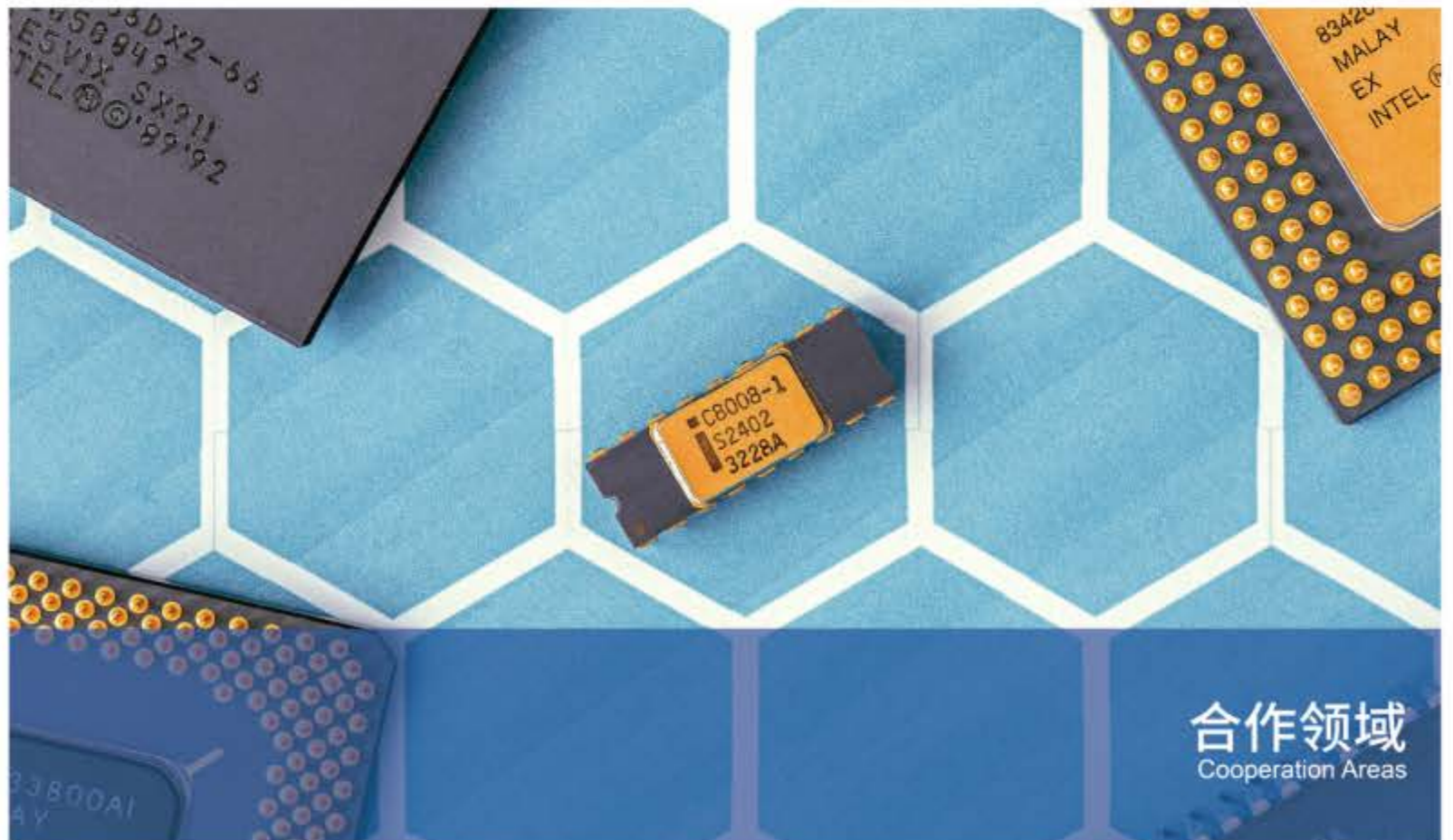
塑料打标

企业荣誉

Our honors

英谷激光在发展进程中,先后荣获多项优秀企业的荣誉称号,现拥有20多项专利证书。

In the process of development, Inngu Laser has obtained lots of honorary titles of excellent enterprise and now has owned over 20 patent certificates.





企业文化

Company Culture

企业使命 Our Mission

做激光行业的领跑者，为人类的生活与发展做出技术贡献

To be the leader of laser industry and make technical contributions to the life and development of human beings

企业愿景 Our Vision

成为全球领先的超快、纳秒固体激光器智选专家

To be intelligent expert on global leading ultrafast and nano second solid laser

服务宗旨 Service Purpose

以服务为基础，以质量为生存，以创新求发展

Service as base, existence with quality, innovation for development

团队风采

Team Presence

公司拥有一支由深耕于激光行业多年的人才组成的团队，多年来致力于技术的改进、产品的创新。

Our team is consisted of the talents who have been laser industry for many years, devoted to product innovation and technology improvement over the years.



团队成员年轻、敏锐，充满朝气，具有创新意识并勇于接受困难和挑战，一直秉承着以客户为本、以服务为准则的信念，坚持以优质的产品、先进的技术为客户提供完美的服务。

Our team members are young, acumen, vigorous, creative and dare to take difficulties and challenges. Our company adheres to the customer oriented, service as the standard, high quality products and advanced technology in order to provide perfect service for our customers.

办公地点

Office Address

服务区域

Service Area

01 苏州总部

服务范围：江苏省

地址：江苏省苏州市工业园区若水路 388 号苏州纳米技术国家大学科技园 G 栋五楼

02 深圳分公司

服务范围：广东省

地址：广东省深圳市宝安区福永街道重庆路骏丰商务大厦 A 座 8 楼

03 山东办事处

服务范围：山东省

地址：山东省济南市槐荫区
山东省聊城市东昌府区

04 武汉办事处

服务范围：湖北省

地址：湖北省武汉市汉阳区

